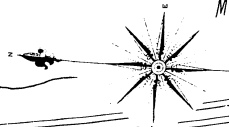
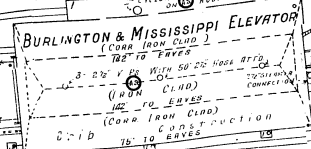


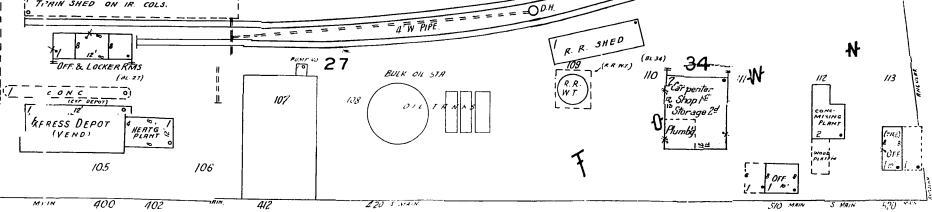
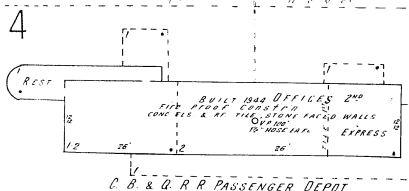
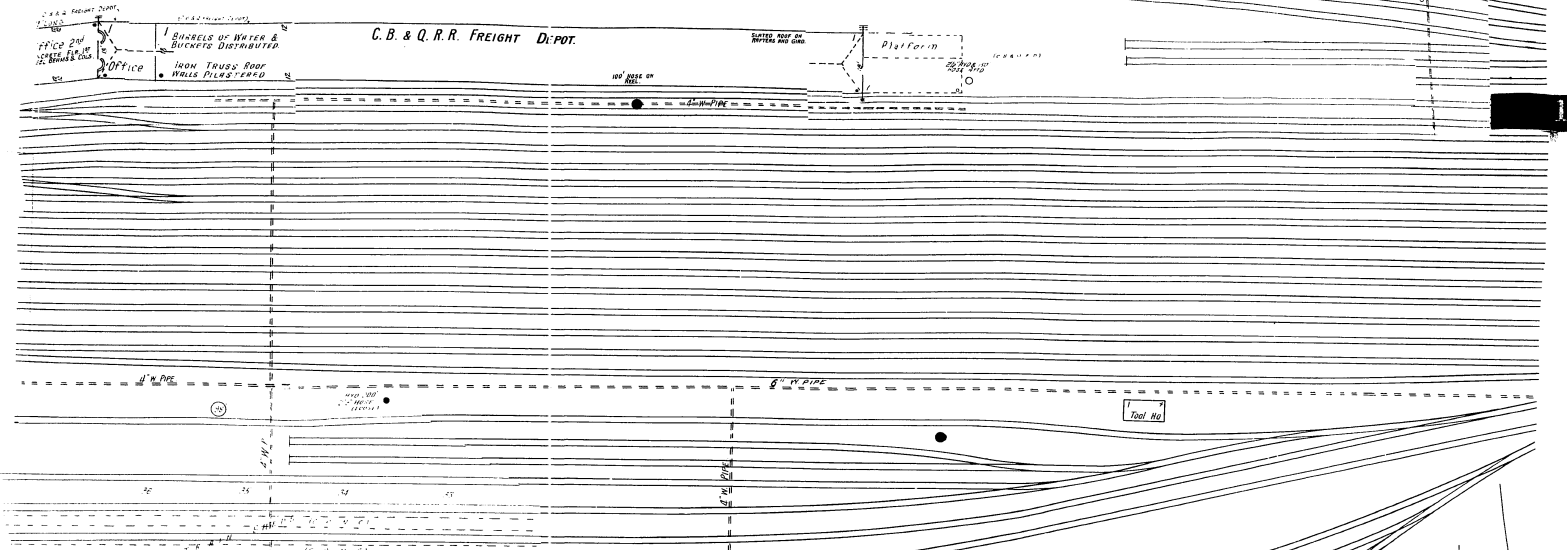
Mississippi River



BURLINGTON & MISSISSIPPI ELEVATOR
NORRIS GRAM CO. LESSEE
OWNED BY C. B. & Q. R. R. OPERATED BY NORRIS GRAM CO. CAPACITY 50,000 & 500,000 LBS. RESPECTIVELY. WIND & SUNRAY WATERS. A HEATED STEAM WATER SUPPLY FROM CITY WATER WORKS. WINDS ARE SUPPLIED BY THE COMPANY'S TUBULE ACTING STEAM PUMP SIZE 12" X 18" X 12" CAPACITY 100 GALLONS PER MINUTE.

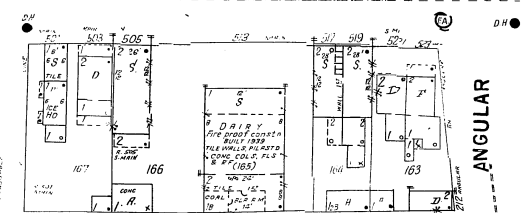
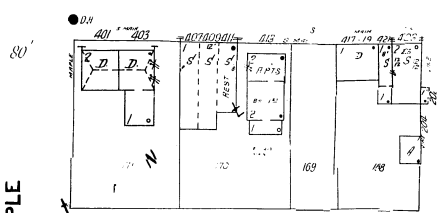
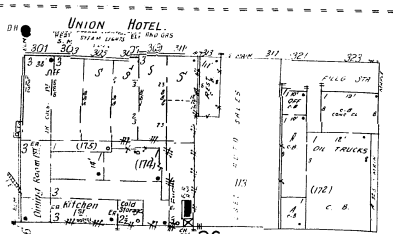


C. B. & Q. R. R. FREIGHT DEPOT

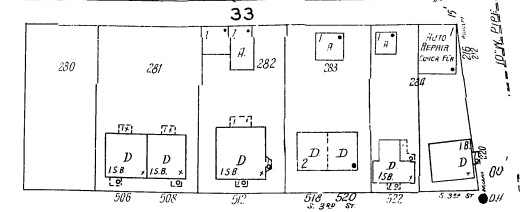
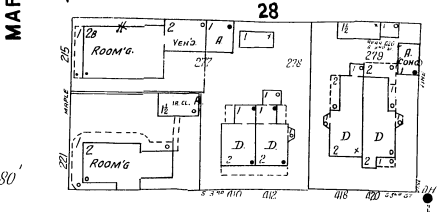
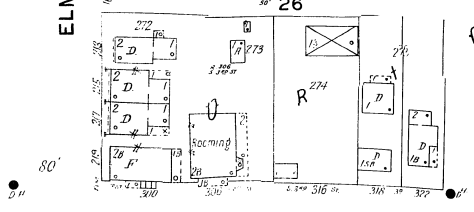


S. MAIN

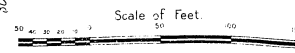
27



ANGULAR



S. 3RD ST.



19

20