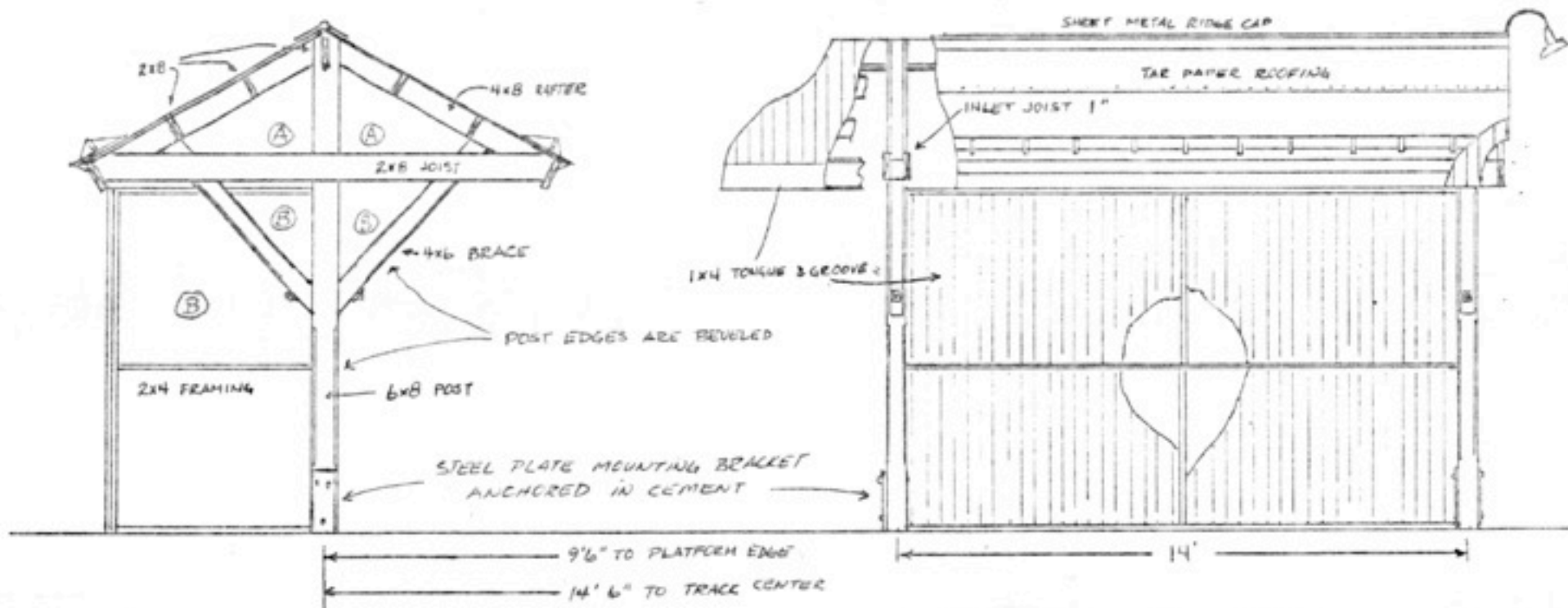


CB&O Passenger Platform circa 1910-1920

Hollywood Station - Brookfield, IL

Structures are usually located directly across the tracks from the depot and accessible by a protected (crossing signals) walkway

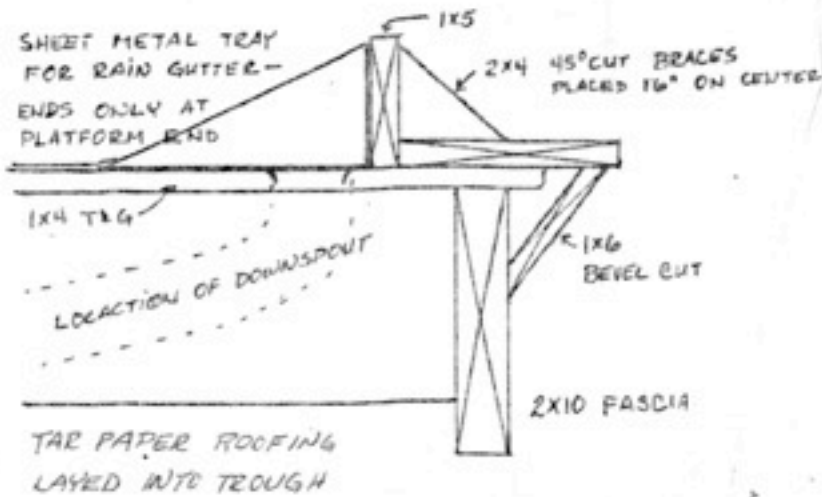


SCALE = 1/4"

Details on other side:

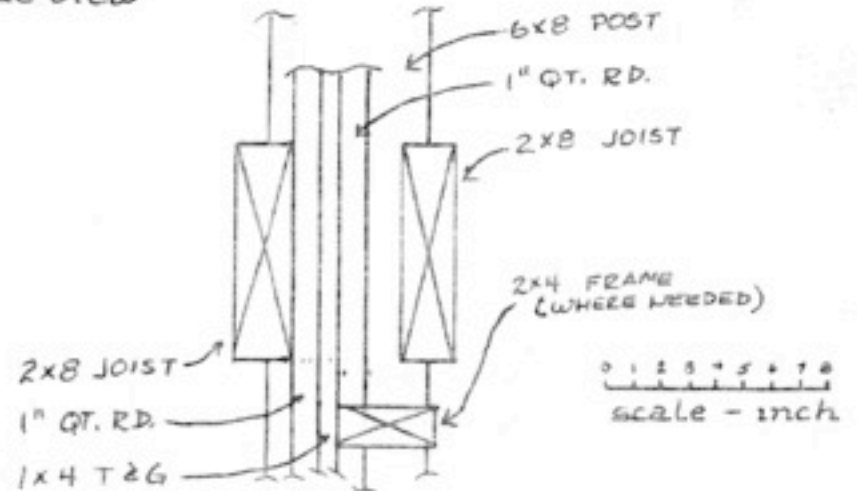
Platform usually made of sand base covered with brick (Purinton Paver) laid in a herringbone pattern. Later they were paved with asphalt. Platform length was adjusted to the average length train it would serve. Structure was seldom longer than 2 car lengths.

Gutter Detail:

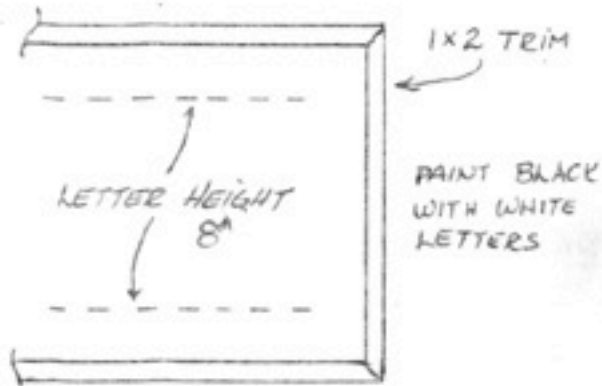


Siding Detail: for ends and pass. shelter

Side View

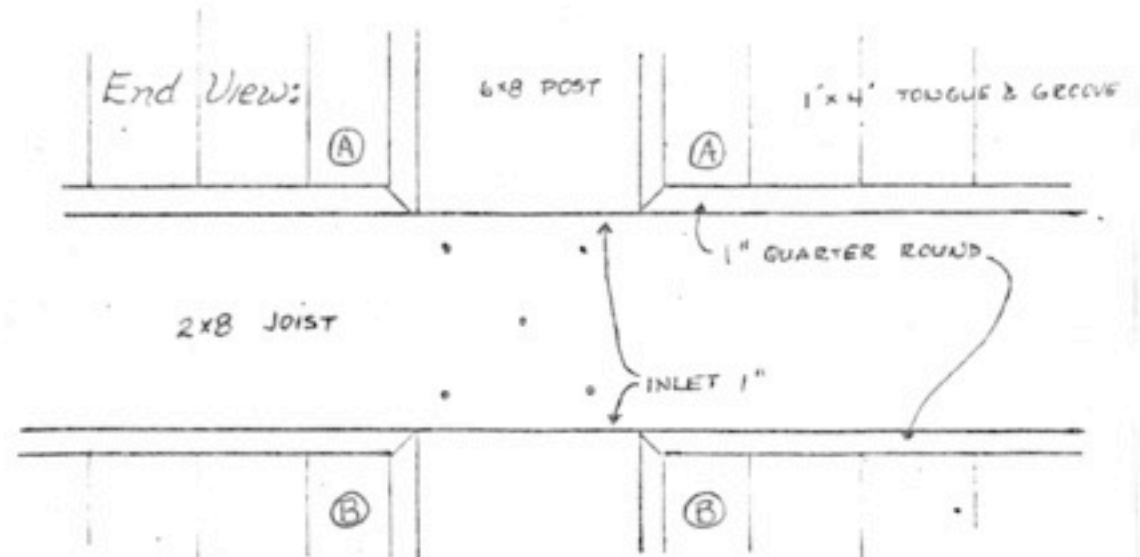


Signboard:



12" HIGH PLUS TRIM

LENGTH VARIED ACCORDING TO STATION NAME - MOST NOT OVER 10'



Sec. (A) closed on platform ends. (A) & (B) both end of shelter