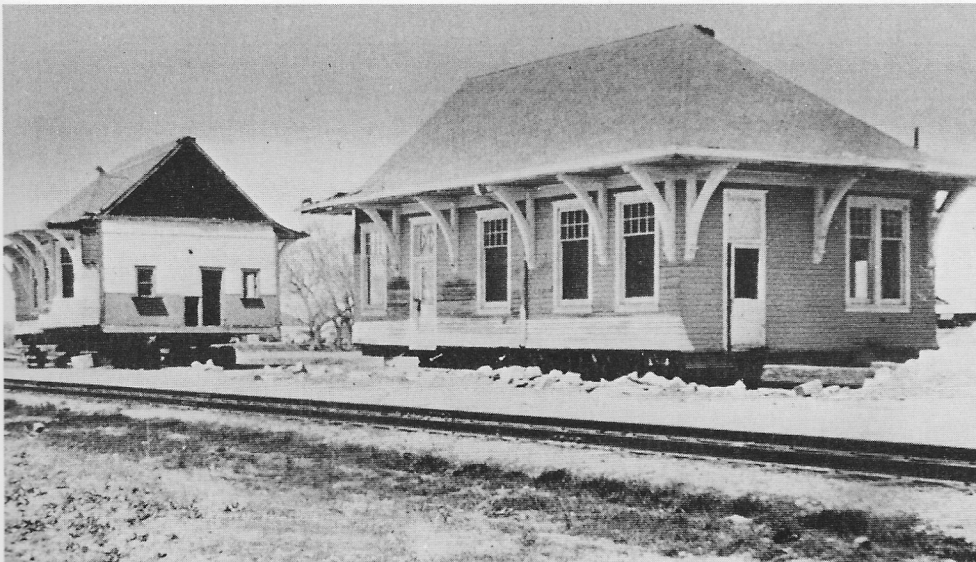




The final fate of the *Morrill* BN depot was similar to many other frame depots across the Midlands that were dismantled so that building materials could be salvaged. By November 1981, dismantling of the Morrill building had progressed to where the one-story freight room had been removed. The painted-on station name that was exposed by this action indicates that the freight room had been added later to the original two-story portion. — **Scottsbluff Star-Herald**



More than a dozen CB & Q two-story depots in Nebraska were reused in part by having the second-story living quarters removed intact from atop the first story. These former upper levels were then adapted as one-story structures. Such a technique was demonstrated in 1959 as, pictured above, the top story of the *Mason City* CB & Q depot was left suspended in air after the bottom story was torn out from under it. The second story was then lowered from its bracing onto house moving equipment for relocation. — **Frank Aden photo**



Housemover John Sample was hired to relocate the original Gering UP depot to *South Mitchell* in 1929. Thirty-four years later, his son, Clayton Sample, was hired to move the same depot again. Then destined for reuse as an office building, Clayton Sample moved the 85-ton building in two sections. — **Jerry Berggren photo**