

MAGNUSON MODELS, INC.

P.O. Box 199, Lake Villa, Illinois 60046

KIT M517 THE HIGHLANDS STATION-HO SCALE

This fine example of Victorian railroad architecture still stands on the Burlington Main Line in Hinsdale, Illinois, a western suburb of Chicago. The HO scale model is a very close replica of the original.

This kit has been designed and manufactured for the individual who appreciates a fine, authentic reproduction of period architecture but who does not have time to "scratch build" his own ideal structures. In a few evenings, with a little care, this building will be a source of pride reflecting the modeler's search for realism in his work. Read through complete instructions before starting construction. A good 5-minute epoxy is best for gluing walls together. Plastic solvent glues will not work.

PREPARATION: A little extra care and time at this point will help insure an outstanding model. With a small file, remove "flash" from castings. Take time to file bevel corners so that gaps are not visible at the corners.

PAINTING SUGGESTIONS: We have used Floquil brand paints with excellent results, but any good quality miniature paint will have no deteriorating effect on the parts. Use "flat" colors. An airbrush will do an excellent job in a short time. However, a paint brush was used on preliminary models with satisfactory results, although extra time and care were required. We have no stock in the company, but we do recommend Floquil's book "Painting Miniatures". It will explain methods used to paint and weather miniatures for the greatest realism. Barrier coat is not necessary.

Paint backs of exterior walls first. (We used "Grimy Black.") This is especially important if interior illumination is planned.

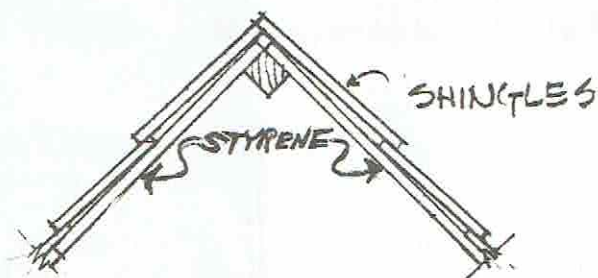
WALL ASSEMBLY: Glue walls together using 5-minute epoxy. Make sure walls are square to each other or roof will not fit properly. If there are any small gaps between walls, fill them with a filler such as spackle, making sure the stone and joint details are not hidden.

PAINTING: (walls and windows) The Highlands Station was built of native Illinois limestone which is a color similar to Floquil's "Earth". We sprayed the whole exterior with "Earth". The prototype's trim color (all wood parts) is now a bright glossy green (Burlington Green). We chose to paint the trim on our model "Pullman Green" because it is more subtle. With a brush, hand paint doors and windows "Pullman Green" or whatever color you prefer. Also paint the "belt" lines above windows this color. Belt line is designated as "A" on elevation drawings. Next, we weathered the whole thing with "Grimy Black" — spraying unevenly to simulate the dirt and grime of a century. Paint gables, rafter ends and wood parts of corbel blocks trim color also. Paint "stone" block at bottom of casting the wall color.

WINDOWS: Fasten acetate over the back of the window openings using acc, epoxy or white glue. Install portion of window frame marked 874 on Drawing #1 using blue stripwood painted trim color. Now install muttin bars ("B" on the elevation drawings). Use the stripwood with the green end and paint trim color. Carefully cut and install using a small amount of white glue. An alternate method to simulate muttin bars is to use a draftsman's ruling pen and line the acetate prior to fastening acetate to walls. Floquil paint can be used in a ruling pen as it comes from the bottle.

SHAKE SHINGLES: Take sheet veneer stock. Using a sharp X-acto knife, cut parallel strips 5/32" wide against the grain. Now use a single edged razor blade and cut "shingles" at random widths from 1/8" to 1/16". Use "shingle guide lines" on roof templates as a guide to lay shingles. Pick up shingles with the end of a sharp X-acto knife and then dip it into a small amount of white glue. Start at bottom and lay first course. Lay several wide shingles and then a narrower one, etc. On the next course, lay top of shingle to second row of "shingle guide lines" so that bottom of shingle lays over the top of lower course. Vary these shingle widths so that the joints between the lower course are covered by the upper course shingles. Overhang shingles slightly at ends of roof. Do a complete section of roof at a time. Allow shingles to extend above roof at peak. When dry, cut shingles off flush with other roof. See drawing below. When two main roofs are finished, complete small triangular sections. This roof will take some time but the final effect is well worth the effort. Wash the entire roof with a very thin

solution of "Grimy Black." Let stand a few moments then wipe off the color with a soft cloth. A few shingles here and there can now be accented with varying shades of brown, grey, and black applied with a small brush and then wiped off with a rag. An overall dusting of 75% "Reefer Grey"—25% "Grimy Black" will complete it.



DETAILS

MAILBOX: May be glued to building or to lamppost.

ROOF: Cut out roof templates (sheet #1) leaving a slight margin (about 1/8"). Glue to styrene roof sheet (870). Cut styrene with sharp modeler's knife and straight edge as per templates. Glue ridge (yellow stripwood - 875) flush with top of one roof. Cut off extra stripwood on both ends. Glue top of second roof to stripwood ridge making sure roofs match at ends. Lay roof on top of building in place so that proper roof pitch will be achieved. Glue end roofs in place, when dry, glue gables (859) in place as shown on sheet #1, glue rafter ends (860) in place under roofs. Glue corbel blocks (861) under gables and rafter ends as shown on sheet #1. Glue gutter stripwood (876) in place as shown on sheet #1.

BENCHES: Glue five pre-cut 3/4" long HO 1x3 together along their edges to form the seat for each bench. When the glue has fully set for these seat assemblies make sure that the ends of the assemblies are even and square and that they are exactly the same length as the pre-cut HO 1x4. Trim if necessary. Glue the bench ends to the seat assembly using a **very small** amount of 5-minute epoxy applied to the seat assembly. The planks should sit right on top of the plank support lip found on the inside of the right and left bench end castings. When this has set up install one of the 1x4 back rest planks so that it just touches the rear edge of the seat plank. Position the next backrest plank 1/16" above the first and the top plank is spaced 1/32" above the middle one. Paint the whole thing with a light coat of "Mud".

SIGNS: Cut white stripwood (877) to length and glue to sign. Glue sign to under side of gable as shown on end elevation drawing. It might appear that the "S" on the end of "Highlands" is squeezed in, but that is exactly the way it is on the prototype. Somebody in the paint shop didn't "Think Ahead."

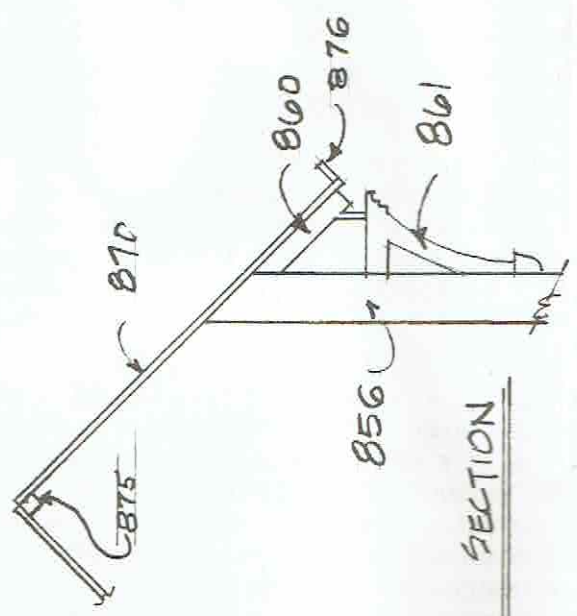
CHIMNEY: Paint chimney "Rust" color. We weathered it "Grimy Black" with heavier color towards the top for a "smoked look."

PLATFORM: We sprayed the platform "Rust" and then painted the retaining ties "Grimy Black." We then weathered the whole thing with a light coat of "Mud."

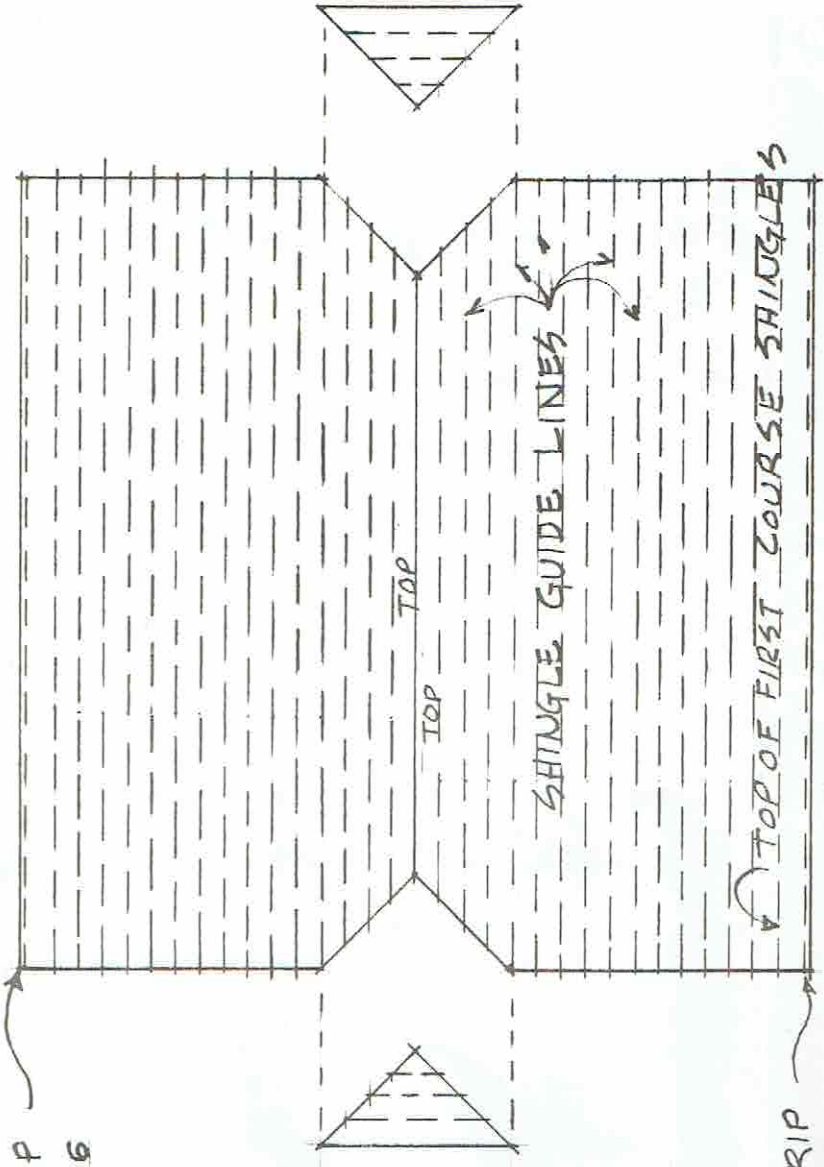
855	End Walls (2)	866	Bench End — Left (2)
856	Side Walls (2)	867	Bench End — Right (2)
857	Chimney	868	Bench Seat Planks — 1x3 (10)
858	Platform	869	Bench Back Planks — 1x4 (6)
859	Gables (2)	870	Styrene Roof Material
860	Rafter Ends (2)	871	Wood Shingle Material
861	Corbel Blocks (10)	872	Acetate Window Material
862	Telephone Poles (3)	873	Stripwood Green (3)
863	Mailbox	874	Stripwood Blue (1)
864	Lampposts (3)	875	Stripwood Yellow (1)
865	Fireplug	876	Stripwood Black (2)
		877	Stripwood White (1)

SHEET # 1

GUTTER STRIP
876



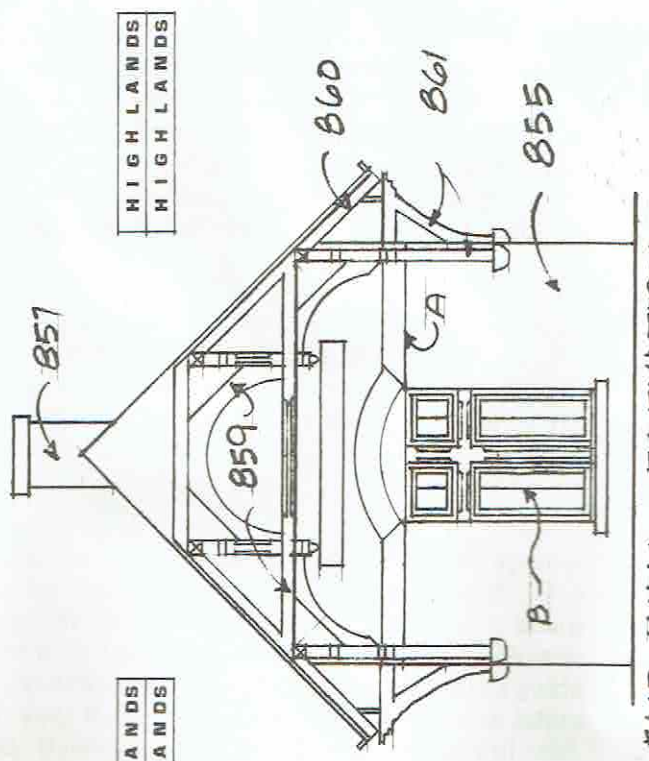
CROSS SECTION



ROOF TEMPLATES

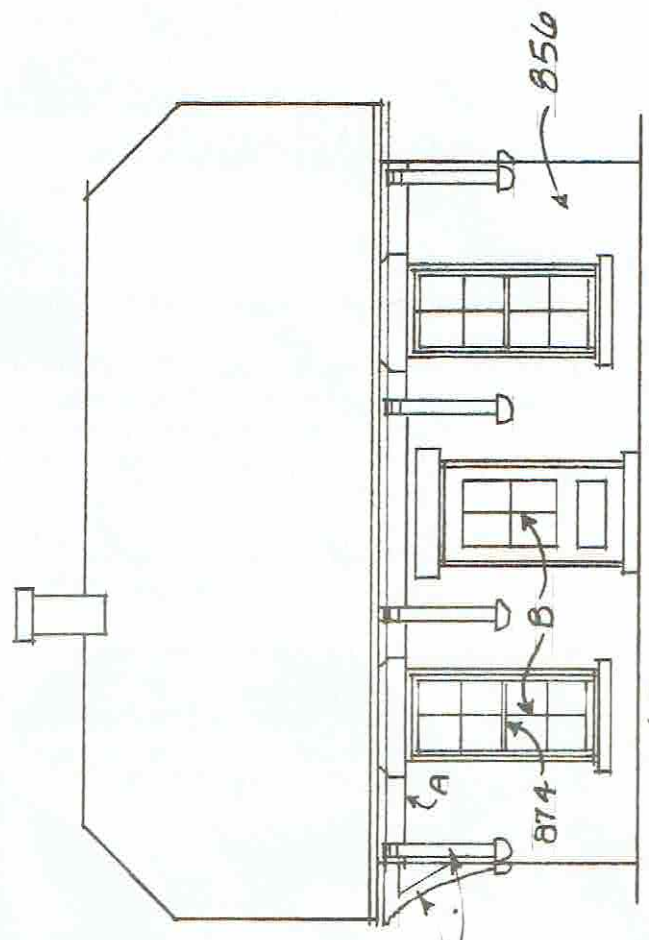
GUTTER STRIP
876

HIGHLANDS
HIGHLANDS



END WALL ELEVATION

HIGHLANDS
HIGHLANDS



SIDE WALL ELEVATION