

INTERSTATE COMMERCE COMMISSION

Date September 25 1919

BUREAU OF VALUATION (Signed) G. M. Stewart,

Carrier C. B. & O. Ry

Subject to Objection for Carrier

Valuation Section 9-1a

act 16 **12 324**

for I. C. C.

H. Schell
Stewart

Assembled

4 piece studs grade 16 ²² x 4 ⁴	557	L ^{1/2}	.63	327.16
552 light fence act 5 lines 2x8 one 10 ² also post 5x10 with 90 light 2x12 running board				
90 light fence 5 lines 1x6 on 9 ² also post 5x10	90	L ^{1/2}	.20	27.00
8 - 2 ² fence gates	8		6 ⁴⁰	51.20
1 - 5 ² " "	1		4 ⁰⁰	4.00
Chairs 4 ² x 16 ² floor 3" pine	16	L ^{1/2}	3 ⁰⁰	48.00
Platfoms 5 ² x 16 ² floor 3" pine	80	P	.30	24.00
2 set steps	2		3 ⁰⁰	6.00
2 - 5 ² set gates	2		4 ⁰⁰	8.00
1 Working beam 4 ² x 10 ² 2" pine	40	P	2 ⁰⁰	80.00
2 blades 10 ² x 18 ² cork 580 leaf 1" pine	760	P	.05	38.00
on 400 light 2x8 5 - 10 ² also post Rope ring 1" pine	1040	BH	43 ⁰⁰	447.20
	10		.75	7.50
	20		.049	98
Painting Circles Stones	630		.40	252.00
	770		2 ⁴⁰	188.00

TOTAL 907⁰⁰ 726⁰⁰

Assembled

INTERSTATE COMMERCE COMMISSION

Date September 25 1919

BUREAU OF VALUATION (Signed) G. M. Stewart,

Carrier C. B. & O. Ry

Subject to objections for Carrier

Valuation Section 9-5-1a

28529 TOTAL 235

Assembled

Assembled

DESCRIPTION	QUANTITY	UNIT PRICE	TOTAL
Stock scales			
5 tons Lumber			
Dble beams			
Rolling machinery			
Platform 80 x 140	1	285.00	285.00
3" pipe			
with flange & girth			
Cone Post x 20' deep			
with 5" T-plate			
Key brace			
Lumber	250'	.43 ⁰⁰	107.50
Hand	30 ⁰⁰	.04	1.20
2-12 cedar posts	2	115	230
Dug well 52' x 20' deep Exc	30 Cords	21 ⁰⁰	630.00
Walls	400 #	.2678	107.12
9" bricks			
concrete			
6" x 6" x 7' pipe	36 #	.089	3.20
Pump			
2-man made lines	1	10 ⁰⁰	10.00
cast 3 x 17' cut			
Paper line			
1 1/2" wire	140'	.35	49.00
1 1/2" globe valve	4	.95	3.80
16" wash water troughs	3	6 ⁰⁰	18.00
1" rubber hose	200'	.12	24.00

TOTAL 271.00

Assembled

INTERSTATE COMMERCE COMMISSION

Date September 25 1919

BUREAU OF VALUATION (Signed) G. M. Stewart,

Carrier C. B. & O. Ry

Subject to Objections for Carrier

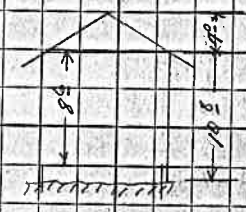
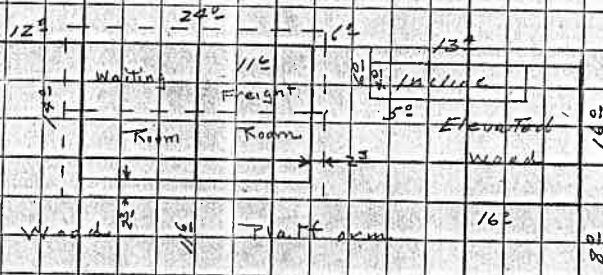
Valuation Section 911a

Acct 16 12 326

G. Stewart
Stewart

Assembled

(20) Depot at Stewart 140 x 240 5' 10" GR.



Iron

8 inch girth lead wire	32	inft.	.50	16.00
24 length 2 x 1 1/2 haly	148	BM	42 ⁰⁰	20.7
52 length 10 x 10 mill	465	Y	40 ⁰⁰	18.60
50 length 1 x 1 1/2 haly	50	BM	42 ⁰⁰	2.10

walls

869-112	757	#	.139	105.22
on 2 x 4 - 2 1/2" girt				
on 2 x 4 - 2 1/2" st				

Openings

1 Dov 5" x 8" x 1 1/2" pine	42	#	.35	14.70
on haly pins				
on window				

Roofs

1 Dov 2" x 8" x 1 1/2" 4P	24	#	.50	12.00
on window				
3 under 2" x 6" x 1 1/2" planks	48	#	.50	24.00
to secured	24	#	.10	2.40

City

100 lbs # 2	655	#	.118	77.29
on 1" pine				
on 2 x 4 - 2 1/2" st				
50 length 1 x 1 1/2 haly	33	BM	45 ⁰⁰	1.49

RP

192	192	#	.136	26.11
on 1" pine				

Date September 25 1919

INTERSTATE COMMERCE COMMISSION (Signed) G. M. Stewart,

Carrier C. B. & O. Ry

BUREAU OF VALUATION

Subject to Objections

Valuation Section 9-1a

acct 1612 339

for Carrier

for I. C. C.

G. M. Stewart

Elliott

Assembled

7 pine plank guards 170 x 58 ^e 890 length fence net 6 lines 2x3 on 10 ^e wide posts 54 ^e	890 ^l inf.	.574	48060
9-00 fence gate	9	64 ^e	5760
1-50 "	1	4 ^e	400
chute 50 x 20 ^e floor 3 ^e pine	23 ^l inf. (15) [#]	3 ^e	6900
Platform 50 x 10 ^e floor 5 ^e pine	80 [#]	.30	2400
2 set steps	2	3 ^e	600
2-50 ext gate	2	4 ^e	800
Wooding board 80 x 10 ^e x 2 ^e pine	50 [#]	.054	267
Sheds 30 ^e x 50 ^e Rof gable - 6 ^e pine comp # 2 on 1x6 DTM br 2 x 6 - 2 ^e sts on 152 ^l inf 6x8 7-10 ^e cedar posts 14 posts 8x8 x 10 ^e Bolts 1x6 DTM on 70 ^l inf 2x6	1775 [#]	.10	17750
	600	312 [#] BMS	43 ^e
	7	1 ^e	805
	742 [#]	200 [#]	.064
	54 [#]	70 [#] B10	43 ^e
			1280
			301
			5320
Paving curbs	383 ^{cy}	.40	15320
stone	384 ^{cy}	2 ^e	7680
Embankment	193 ^{cy}	.20	38600
Water line 1 1/2" W.P. supply from city	312 ^l	.35	10920

TOTAL 1980^e 1380^e

Assembled

Date September 25 1919
 Carrier G. B. & O. Ry
 Valuation Section 9 B-1a

INTERSTATE COMMERCE COMMISSION
 BUREAU OF VALUATION

(Signed) G. M. Stewart,
 Subject to Objections
 for Carrier
 for I. C. C.

acct. 16

12 340

G. M. Stewart

slight

Assembled

4 hydraulic rams	}	4	6 ³⁰	25 ³⁰
30 light 1 1/2" dia				
2 - 1 1/2" sockets	}	4	4 ⁰⁰	16 ⁰⁰
Value box 32 x 32 x 42				
2" joist				
16" wood water troughs		2	6 ⁰⁰	54 ⁰⁰
1/4" rubber hose		30'	-20	6 ⁰⁰
Dug well 52 x 232	}	Exc	5	40 Cuyd
bricks curb				
concr				
2" planks				
Abandoned				
Pipe line	}			
2" w.P. - 426'			42	limit
abandoned				

~~45
 abandoned
 2~~

TOTAL 1012

Assembled

Date C.B. & O. Ry
 Carrier 9 B-a
 Valuation Section

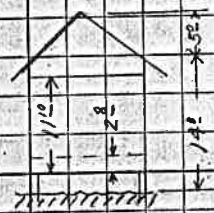
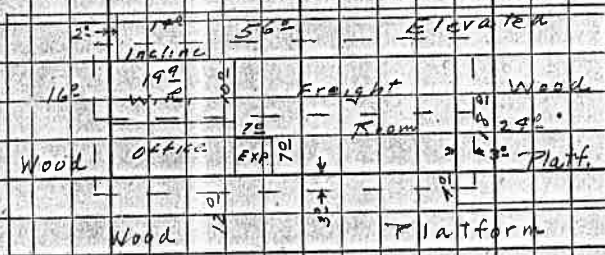
BUREAU OF VALUATION

Subject to Objections
 for Carrier

acct 16 12 343

Elliott for I. C. C.

Depot at Elliott 180 x 560 } 192 G.R.



21 wall joist heels x 4.0	84' limit	.50	42.00
126 joist 2 x 2 blk	352' BS	.42 ⁰⁰	10.58
170 " " 10 x 10 sill	1411' v	.40 ⁰⁰	56.40

Walls	2162-93	1969 #'	.163	320.95
on 2 x 4	2 x 4 girt			
on 2 x 6	2 x 6 st			

Openings		96 #'	.35	33.60
2 doors 5'8" x 8'5" 2 1/2" pine				
on 2 x 4 girts				
Transoms				
Plan		25 #'	.65	16.25
1 door 2'10" x 8'0" x 1 3/4" 4P				
Transoms		72 #'	.50	36.00
4 wood 2'10" x 6'0" x 1 3/4" plank				

Roof		1785 #'	.143	255.26
Comps # 2				
on 1" pine				
on 2 x 6 - 2" st				
2 x 2 collar beams 4" st		40' BS	.43 ⁰⁰	17.20
80 joist 1 x 6 flooring				

R.P.		480 #'	.136	65.28
ceiling on walls				

Assembled

Date September 25 1919

BUREAU OF VALUATION (Signed) G. M. Stewart,

Carrier C. & O. Ry

Subject to Objections for Carrier

Valuation Section 3-18

acct 16

12 361

of F. C. C.

Assembled

80 Pine studs 4x4 @ 25¢ x 70¢ 1320 light pine mit 5' line 2x6 on 8x8x10 post 5¢ ct	1320 Linft. @ 52¢	686 40
15-82 fence gates	15 @ 6 40	96 00
1-52 " "	1 @ 4 00	4 00
chute 52x242 floor 3" pine	24 Linft. @ 3 00 120 #	72 00
Platform 52x162 floor 3" pine	80 # @ 30	24 00
3 sets steps	2 @ 3 00	6 00
2-52 set gates	2 @ 4 00	8 00
2 Sheds 282x482 each Kot. gable 6" dia. 15ozx2. 6x8 on 10 line 2x6 joist 10x2 on 2x8-32 ft 2x8 collar beam 6¢ ct 10-10" star post Boxing 1" pine @ 26¢ on 60 light 2x6	3004 # @ .15	450 60
Raving		
Curbs	60 cy @ .40	24 00
Broken Bricks	60 cy @ 1 00	60 00
Stone	75 cy @ 2 00	150 00
Lumber tie	150 @ .35	52 50
	TOTAL	1739 00
Water line 1/4" O.D.P.	2040 @ .35	71 40
2 Hydrants each of 1-1/2" work	2 @ 1 15	23 00
Valve box 32x32x42 2" pine	2 @ 6 00	12 00

10
520 #
60 BM

Assembled

Date September 25 1919

BUREAU OF VALUATION

Subject to Objections for Carrier

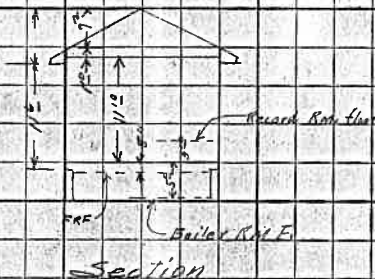
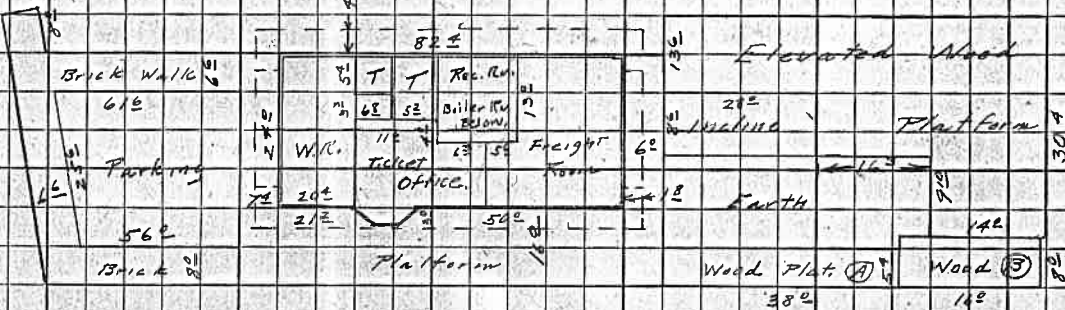
Carrier U.S. & O. Ry

Valuation Section 9-1a

act 12 365

G. S. Ball for L. C. C.

① Depot at Grinnell 240 x 82 ft



Ida			
Excav		70 Cuyds. .50	35.00
dry earth			
concrete			
260 line ft wall 9" x 4.5 ft	29	53 Cuyds 9.50	503.75
on foot 12 x 12 ft	14		
50 line ft wall 9" x 5 ft	7		
on foot 12 x 12 ft	3		
	53		
Walls			
33 concrete & packing			
Soft roofing slat			
on paper	3024-403	2621# .192	503.23
on 12 ft frame			
on 2 x 4-7.5 ft			